

I-95 AT NORTHLAKE BOULEVARD



Project Development & Environment (PD&E) Study
Project Limits: I-95/SR 9 from approximately 0.5 miles north and south of Northlake Boulevard & Northlake Boulevard from Military Trail to Sunrise Drive/Sandtree Drive in Palm Beach County, Florida

Financial Project ID Number: 435803-1-22-02
Efficient Transportation Decision Making (ETDM) Number: 14182

PROJECT DESCRIPTION

The Florida Department of Transportation (FDOT), District Four, is conducting a Project Development & Environment (PD&E) Study along I-95/SR 9 at the Northlake Boulevard interchange in Palm Beach County. The purpose of the study is to evaluate interchange ramp improvements to improve traffic operations and reduce traffic congestion on the exit ramps from backing up on to I-95 through the year 2040. The study considers the No Build Alternative and three "Build" alternatives which includes the interchange and portions of Northlake Boulevard.

Alternative 1 improvements include:

- Additional through lanes along Northlake Boulevard from Military Trail to Sunrise Drive/Sandtree Drive.

- Sidewalk and bicycle lane improvements are included.
- I-95 exit ramps would have triple left turn lanes and triple right turn lanes.

Alternative 2 improvements include:

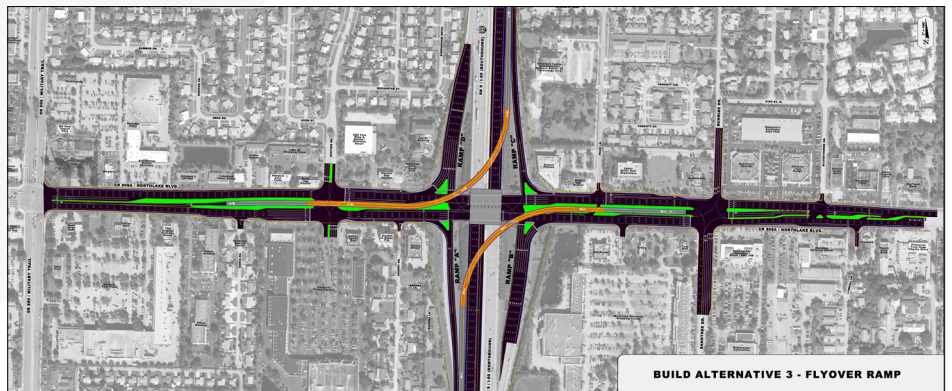
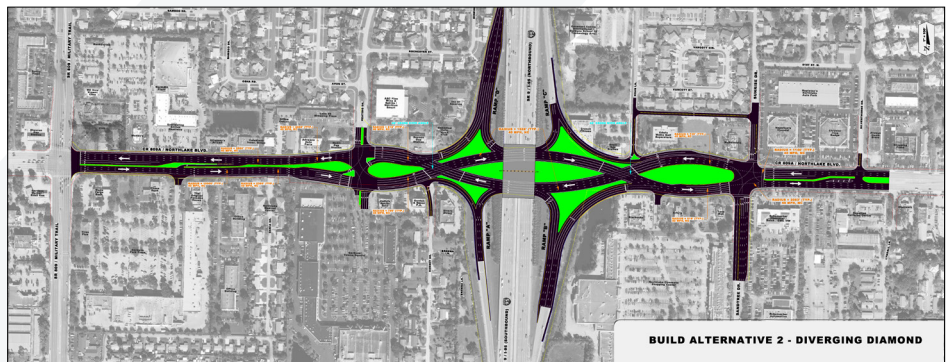
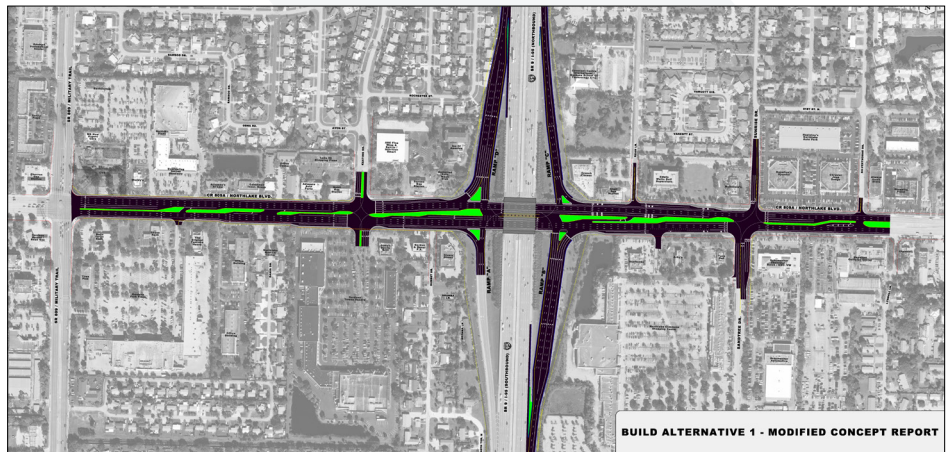
- Includes Alternative 1 improvements with a Diverging Diamond Interchange configuration.

Alternative 3 improvements include:

- Includes Alternative 1 improvements with elevated I-95 entrance ramps.

No Build Alternative:

- No Build or No Action alternative means no improvements would be constructed.



PROJECT CONTACT

Scott Thurman, P.E.

Project Manager

Florida Department of Transportation

District Four

3400 West Commercial Boulevard

Fort Lauderdale, FL 33309

(954) 777-4135 / (866) 336-8435 ext. 4135

Scott.Thurman@dot.state.fl.us

For more information, please visit our website at www.95northlake.com.

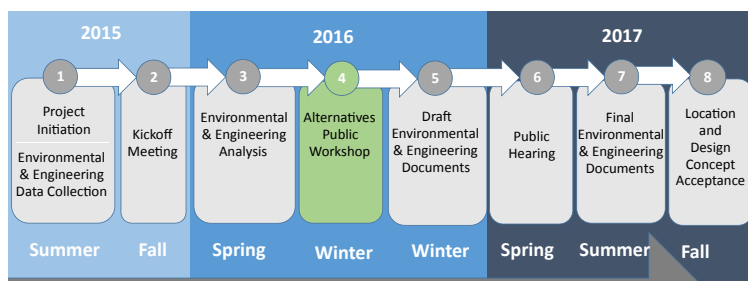
PROJECT NEED

The I-95 exit ramps at Northlake Boulevard are experiencing traffic congestion causing vehicles to slow or stop within the freeway portion of I-95. The traffic conditions in the year 2040 are projected to become more congested with the average vehicle waiting at the stoplights for two to three minutes if no improvements are built. This represents an unacceptable Level of Service "F" (LOS). Level of Service (LOS) is a function of the average time vehicles will be delayed at intersections. The interchange will have insufficient capacity to accommodate the projected traffic demand. The proposed enhancements improve traffic flow at the interchange and along Northlake Boulevard by providing additional travel lanes, turn lanes and interchange ramp improvements to reduce conflict points, improve safety and enhance emergency evacuation.

This interchange is one of 17 being studied in Palm Beach County as part of the I-95 Interchange Master Plan. Overall, this plan will recommend new short-term and long-term improvements to I-95 interchanges based on changes in traffic volumes and new design standards.

WHAT IS A PD&E STUDY?

A Project Development and Environment (PD&E) Study is a process conducted by the Florida Department of Transportation (FDOT) to determine the environmental, social and economic impacts that are associated with proposed transportation improvements. The process, mandated by the National Environmental Policy Act (NEPA), is a combined effort by professional engineers, planners, environmental scientists and others who analyze the project-related information to develop the best alternative for a community's transportation needs.



Community Outreach

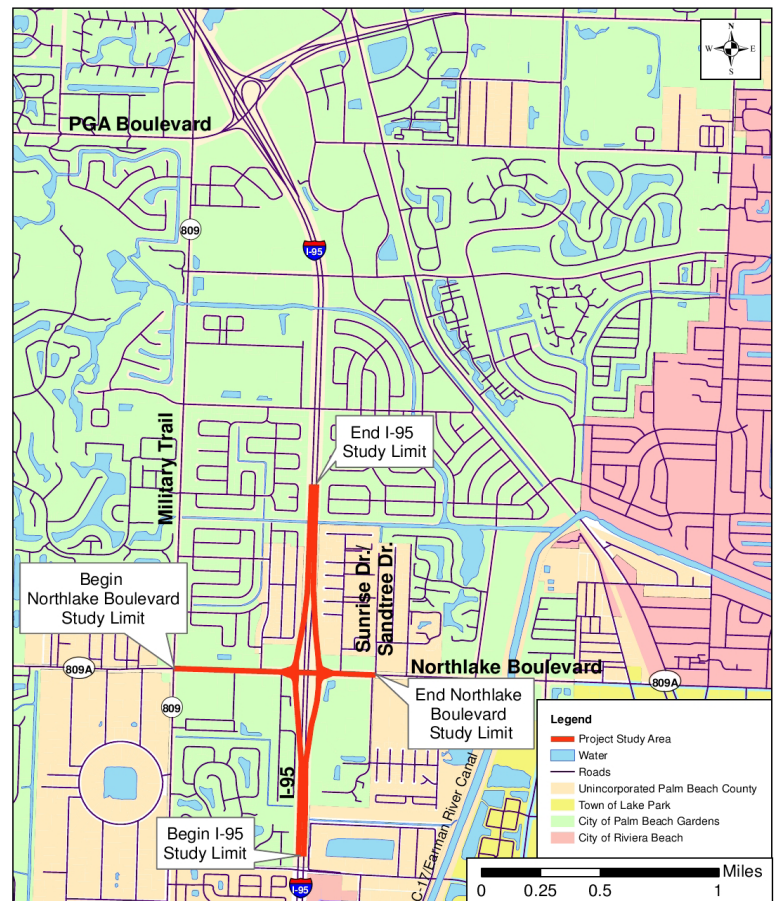
A continuous community outreach process is integrated into every step of the project to ensure that the corridor residents, businesses, the traveling public and other interested parties have meaningful participation in the process.

HOW CAN YOU GET INVOLVED?

There is no need to wait until a public meeting to provide your input. Public comments and questions are welcomed at any time throughout the study. We are available for small group meetings with your neighborhood or special interest group. Please see our contact information column to view the different ways you may contact the project team.

STUDY WEBSITE:

Please visit the study website at www.95northlake.com. It will be updated on a regular basis to provide the latest study information. You can also request to be added to the email list.



ALTERNATIVES PUBLIC WORKSHOP:

You are invited to an Alternatives Public Workshop where the transportation improvement alternatives that have been developed at this point in the study will be presented. The workshop will provide you with the opportunity to discuss the social, environmental and economic effects of each of the alternatives, which have been developed to meet the needs of the project. The workshop also serves as an opportunity to receive input from local officials, agencies and stakeholders.

The workshop will be held in an open-house format where attendees may review study information. FDOT staff and consultant staff members will be available at the workshop to discuss the project and answer questions.

DATE:

Thursday, December 8, 2016

TIME:

5:30 p.m. to 7:30 p.m.

LOCATION:

Marriott Hotel
4000 RCA Boulevard
Palm Beach Gardens, FL 33410



Public participation is solicited without regard to race, color, national origin, age, sex, religion, disability or family status. Persons who require special accommodations under the Americans with Disabilities Act or persons who require translation services (free of charge) should contact Mr. Scott Thurman, P.E., FDOT Project Manager, at (954) 777-4135, or by email at Scott.Thurman@dot.state.fl.us, at least seven days prior to the meeting. If you are hearing or speech impaired, please contact the agency using the Florida Relay Services, 1 (800) 955-8771 (TDD) or 1 (800) 955-8770 (Voice).